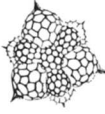


7EME JOURNEES ANDRE PICARD 2016



Jeudi 31 Mars

(Amphi 56B)

- 09h-09h30 : **Bienvenue/Welcome**
- Modérateur.trice/Chairman.women: Laure Bonnaud-Ponticelli/Michel Gho*
- 9h30-9h45 **MC DOUGALL Alex** UMR 7009-UPMC-Villefranche
Le Réseau André Picard/SATS-SU : Bilan, éléments de réflexion, perspectives
- 9h45-10h **ATGER Véronique** : Directrice Recherche Sorbonne Universités
Echéances et perspectives de Sorbonne Universités
- 10h-10h20 **CHARRIER Bénédicte** UMR 8227-UPMC-Roscoff
Filamentous development of the brown alga *Ectocarpus*: from tip growth to cell differentiation.
- 10h20-10h35 **ESCRIVA Hector** UMR 7232-UPMC-Banyuls PEC+/Schubert
A single three-dimensional chromatin compartment in amphioxus indicates a stepwise evolution of vertebrate Hox bimodal regulation
- 10h35-10h50 **MC DOUGALL Alexander** UMR 7009-UPMC-Villefranche
Mechanisms controlling cell size, number and position during embryogenesis in the ascidian
- 10h50-11h20** *Pause-café/Coffee break*
- 11h20-11h35 **COSSE-ETCHEPARE Camille** UMR 7622-UPMC-Paris PEC/Schubert-Lebouffant
Pou3f proteins and kidney development
- 11h35-12h20 **KLOAREG Bernard** Dir. Station Biologique de Roscoff-UPMC
EMBRC et EMBRC-France : que pouvez-vous en attendre ?
- 12h30-14h** *Déjeuner/Lunch at Cafeteria UPMC*
- Modérateur/Chairman: Alex McDougall*
- 14h-15h **OPENING TALK: PROCHIAANTZ Alain, Collège de France**
Signaling with homeoprotein transcription factors from development to pathologies
- 15h00-15h15 **ALMEIDA Luis** UMR 7598-UPMC-Paris
Mathematical modeling of Epithelial Gap Closure
- 15h15-15h30 **MAZAN Sylvie** UMR 7232-UPMC-Banyuls PEC+/Schubert
Dual role of Nodal signaling in the control of asymmetric neurogenesis in the catshark developing habenulae
- 15h30-15h45 **SCHUBERT Michael** UMR 7009-UPMC-Villefranche PEC/Hirsinger
Evolution of retinoic acid signaling functions during nervous system development
- 15h45-16h15** *Pause-café/Coffee break*

Modératrice/Chairwomen: Julia Morales

- 16h15-16h35 **FLASH PRESENTATION/POSTER M2: CYPRIA Julie, FAILLA Margaux, LEMONNIER Tom, RIO-CABELLO Antoine, SCAROS Alexia**
- 16h35-16h50 **QUIROGA ARTIGAS Gonzalo** UMR 7009-UPMC-Villefranche
Light-induced oocyte maturation in the hydrozoan *Clytia hemisphaerica*
- 16h50-17h05 **TOSTIVINT Hervé** UMR 7221-MNHN-Paris PEC/Escriva
Search for peptides related to urotensin II and somatostatin in amphioxus
- 17h05-17h20 **CHRISTIANS Elisabeth** UMR 7009-UPMC-Villefranche PEC/Geneviere
From Heat Shock to Stress Response in marine organisms
- 17h20-17h35 **DONATI Antoine** UMR 7622-UPMC-Paris PEC/Momose-Vesque
How to position cilia along the Antero/Posterior axis?
- 17h35-17h50 **FERREIRA-GONÇALVES João** UMR 7138-UPMC-Paris
Anthozoan polarity axis: insights from the study of two antipatharian species
- 19h00** **Buffet Réunionnais, posters, et vue sur Paris - Tour ZAMANSKY-UPMC/
Buffet of Reunion Island, posters, and Paris view – Zamansky Tower-UPMC**

Vendredi 1^{er} avril

(Amphi Durand-Bâtiment Esclangon)

Modératrice/Chairwomen : Frédérique Peronnet

- 09h30-9h45 **BONNAUD PONTICELLI Laure** UMR 7208-MNHN-Paris PEC+/Escriva
Extraocular photoreception in aquatic species and its developmental control: a comparison between amphioxus and cuttlefish.
- 09h45-10h00 **CHAMBON Jean-Philippe** UMR 7138-UPMC-Paris PEC/Tiozzo
Constructive function of apoptosis during morphogenetic process: a comparative approach
- 10h-10h15 **SCHNEIDER-MAUNOURY Sylvie** UMR 7622-UPMC-Paris
Avec **Marie POSTEL** UMR7598-UPMC-Paris
Designing a mathematical model of the dynamics of progenitor cell populations in the mouse cerebral cortex
- 10h15-10h30 **LECLERE Lucas** UMR 7009-UPMC-Villefranche PEC/Copley
Genome and life stage-specific transcriptomic data from the hydrozoan medusae *Clytia hemisphaerica*
- 10h30-11h00** **Pause-café/Coffee break**
- 11h-11h30 **DUMOLLARD Rémi** UMR 7009-UPMC-Villefranche
Phallusia mammillata: an emerging model for molecular toxicology and image-based screens
- 11h30-11h45 **TIOZZO Stefano** UMR 7009-UPMC-Villefranche PEC/Chambon
Co-option of germ layers related TFs shows regionalized expression during two non-embryonic developments

- 11h45-12h00 **CASTELLANE Ariane** Paris Sorbonne-Paris IV
La métaphore cognitive en biologie
- 12h-12h15 **CROCE Jennifer** UMR 7009-UPMC-Villefranche PEC/DeLishi
Towards the identification of an ancestral *Wnt* function
- 12h15-12h30 **DARRAS Sébastien** UMR 7232-UPMC-Banyuls PEC/Chenevert
Comparative development of the neurogenic tail epidermis midlines in ascidians

12h30-14h00 Déjeuner/Lunch at Cafeteria UPMC

- 14h-14h15 **CORMIER Patrick** UMR 8227-UPMC-Roscoff
Towards a model of the spatio-temporal dynamics of the translation repressor 4E-BP regulation network
- 14h15-14h30 **MOMOSE Tsuyoshi** UMR 7009-UPMC-Villefranche PEC/Giovannangeli
Gene KO technique in *Clytia hemisphaerica*: taking advantages of asexual reproduction and stem cell specific DNA repair
- 14h30-14h45 **VANMAELE Sofie** UMR 7009-UPMC-Villefranche
CORBEL: A new H2020 project for biomedical research

**15h00-15h30 Discussion générale-Bilan-Perspectives
General discussion-Synthesis-Prospects.**

